

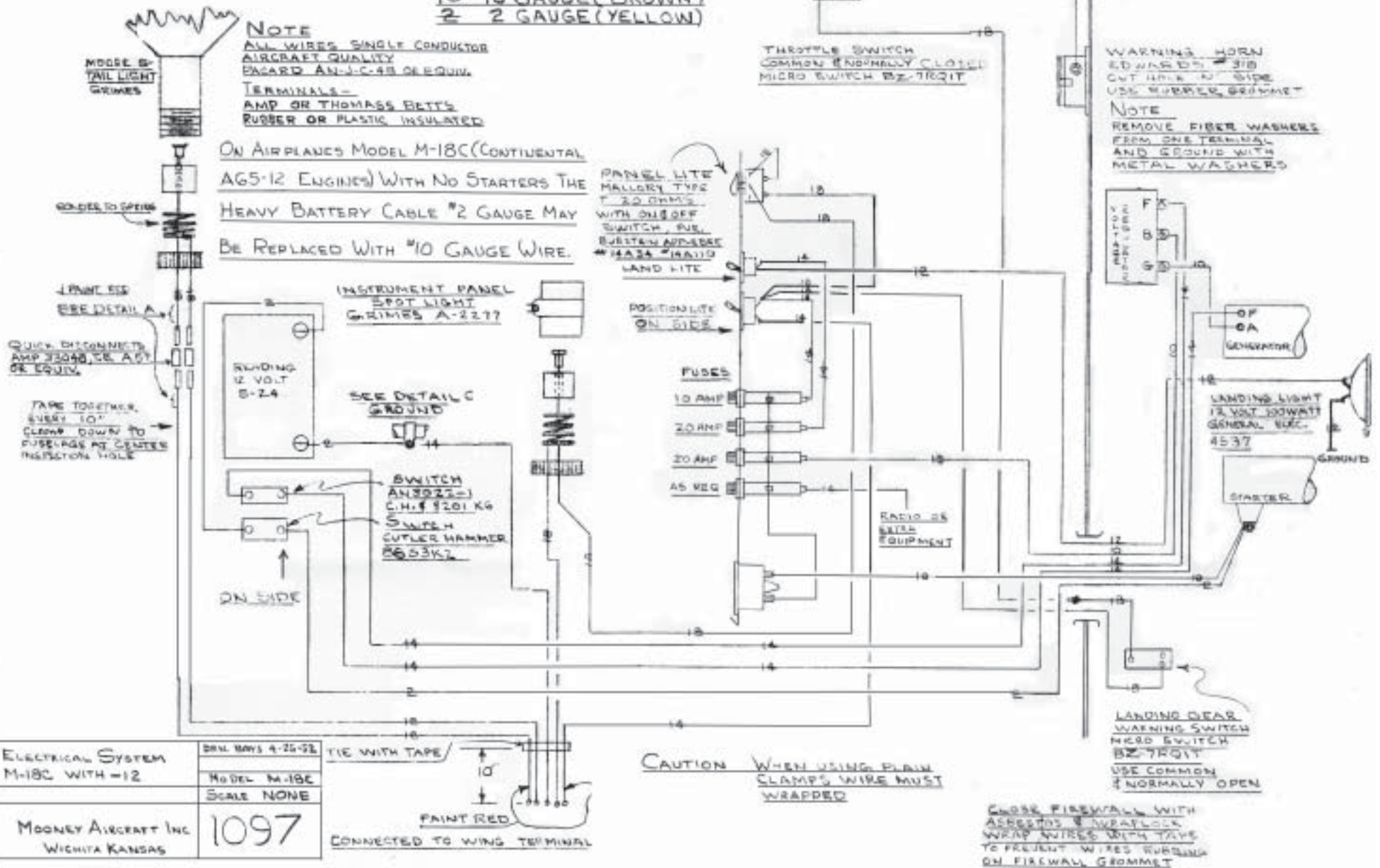
WIRE CODE

- #8 18 GAUGE (RED)
- #14 14 GAUGE (BLACK)(WHITE)(BLUE)
- #12 12 GAUGE (GREEN)
- #10 10 GAUGE (BROWN)
- #2 2 GAUGE (YELLOW)

NOTE

ALL WIRES SINGLE CONDUCTOR
 AIRCRAFT QUALITY
 PACARD AN-J-C-48 OR EQUIV.
TERMINALS-
 AMP OR THOMAS BETTS
 RUBBER OR PLASTIC INSULATED

ON AIRPLANES MODEL M-18C (CONTINENTAL
 AG-5-12 ENGINES) WITH NO STARTERS THE
 HEAVY BATTERY CABLE #2 GAUGE MAY
 BE REPLACED WITH #10 GAUGE WIRE.



THROTTLE SWITCH
 COMMON (NORMALLY CLOSED)
 MICRO SWITCH BZ-7RQIT

WARNING HORN
 EDWARDS #318
 CUT WIRE TO SIDE
 USE RUBBER GROMMET

NOTE
 REMOVE FIBER WASHERS
 FROM ONE TERMINAL
 AND GROUND WITH
 METAL WASHERS

PANEL LITE
 HALLORY TYPE
 20 OHMS
 WITH ON/OFF
 SWITCH. FUSE
 BURNIN ADDRESS
 #434 #441D
 LAND LITE

FUSES
 10 AMP
 20 AMP
 20 AMP
 45 REG

OF
 6A
 GENERATOR

LANDING LIGHT
 12 VOLT 100WATT
 GENERAL ELEC.
 4537

STARTER

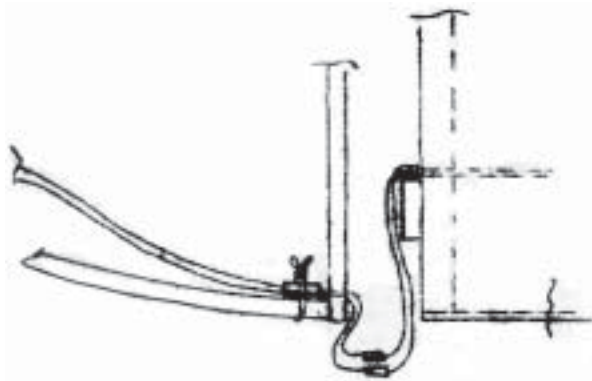
LANDING GEAR
 WARNING SWITCH
 HEAD SWITCH
 BZ-7RQIT
 USE COMMON
 & NORMALLY OPEN

CAUTION WHEN USING PLAIN
 CLAMPS WIRE MUST
 BE WRAPPED

CLOSE FIREWALL WITH
 ABRASIVE & SURFLOCK
 WRAP WIRES WITH TAPE
 TO PREVENT WIRES RUBBING
 ON FIREWALL GROMMET

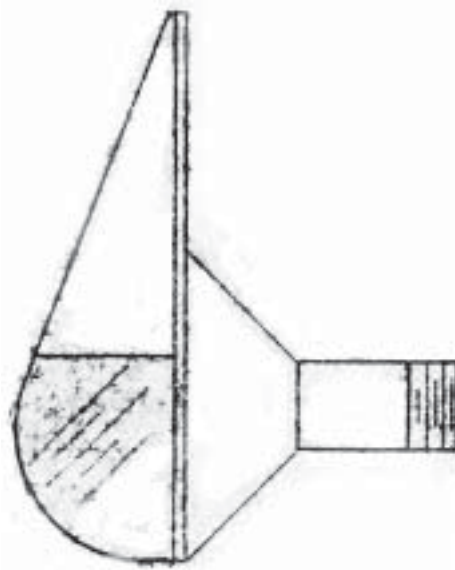
ELECTRICAL SYSTEM M-18C WITH -12	DRW NOVS 4-25-52
	MODEL M-18C
	SCALE NONE
MOONEY AIRCRAFT INC WICHITA KANSAS	1097

TIE WITH TAPE
 10'
 PAINT RED
 CONNECTED TO WING TERMINAL



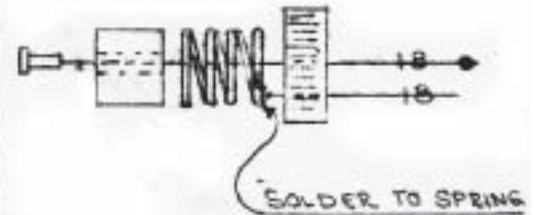
PULL WIRES TIGHT FROM TAIL LIGHT
TAPE TOGETHER & TIE WITH SAFETY TO
BOTTOM OF TAIL CONE, ALLOW 6"
BETWEEN TIE & DISCONNECT.
PULL FUSELAGE WIRE TIGHT, WRAP WITH
TAPE & CLAMP AS SHOWN. 1/4 CLAMP
USE WOOD SCREW, ALLOW 10" FROM
CLAMP TO DISCONNECT. TAPE DISCONNECTS

DETAIL A



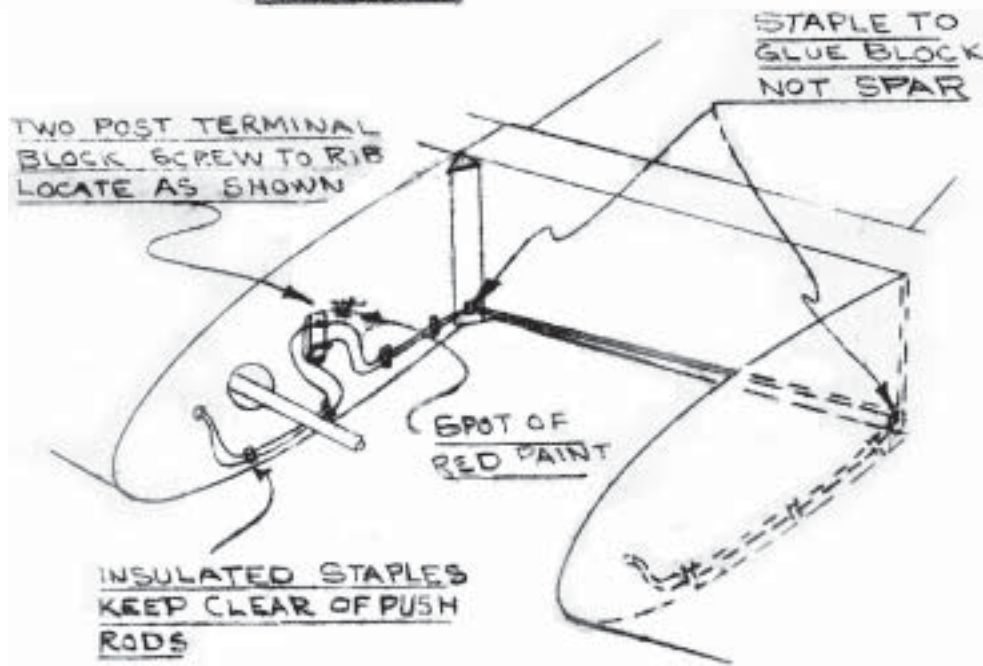
FLEX-GLASS
REFLECTOR

ELECTRICAL SYSTEM M-18C WITH -12	BRN 0415 4-75-52
	MODEL M-18C
	SCALE NONE
MOONEY AIRCRAFT INC WICHITA KANSAS	1097

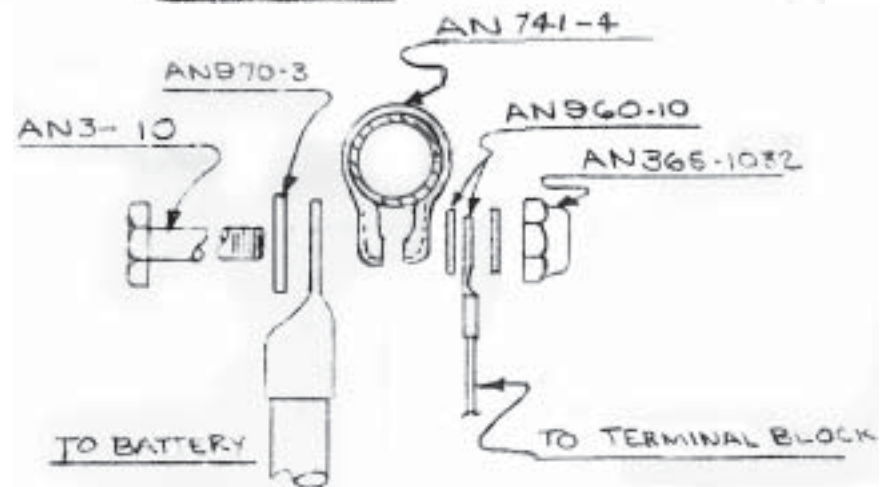


WING TIP LIGHT DETAIL
INSTALL WITH 4 X 3/4 F.H.
WOOD SCREWS
RIGHT GREEN, LEFT RED
GRIMES MODEL E 12V

DETAIL B



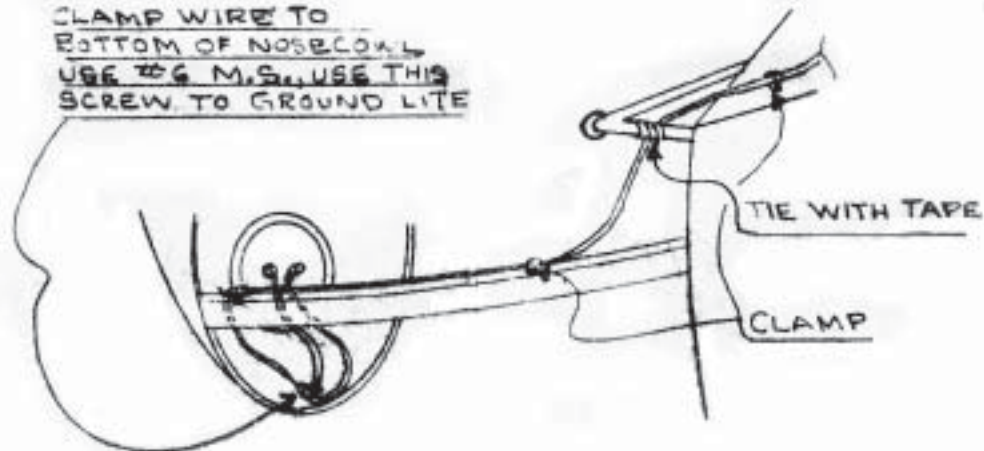
WING ROOT DETAIL D



GROUND DETAIL C

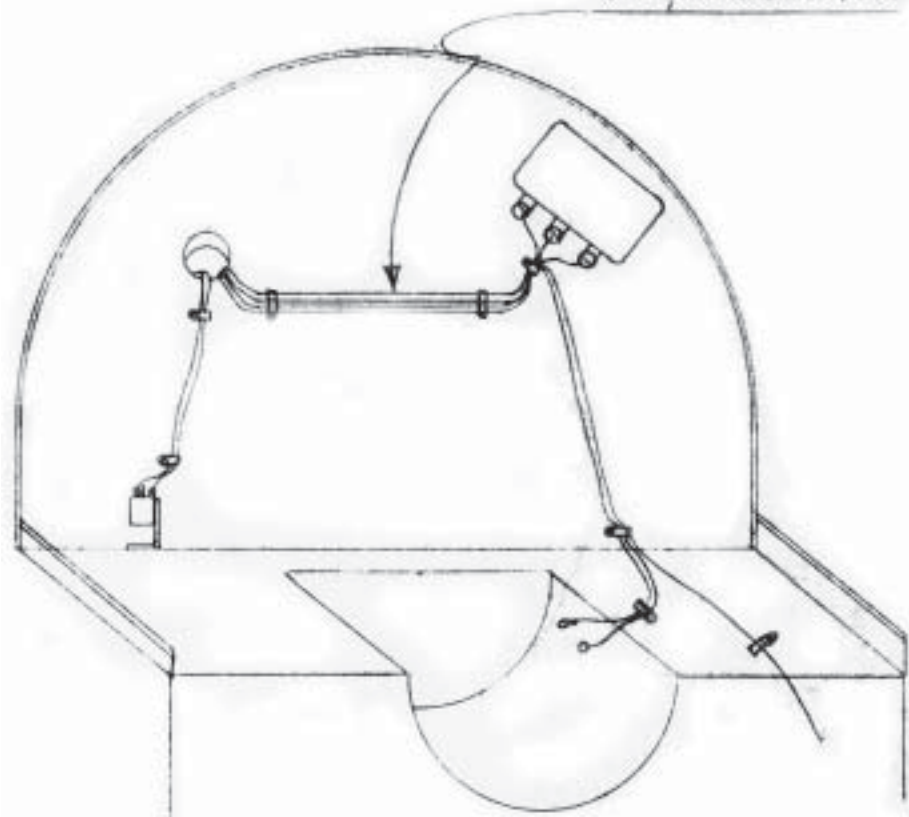
REMOVE PAINT UNDER CLAMP

CLAMP WIRE TO
BOTTOM OF NOSE CON. L.
USE #6 M.S., USE THIS
SCREW TO GROUND LITE

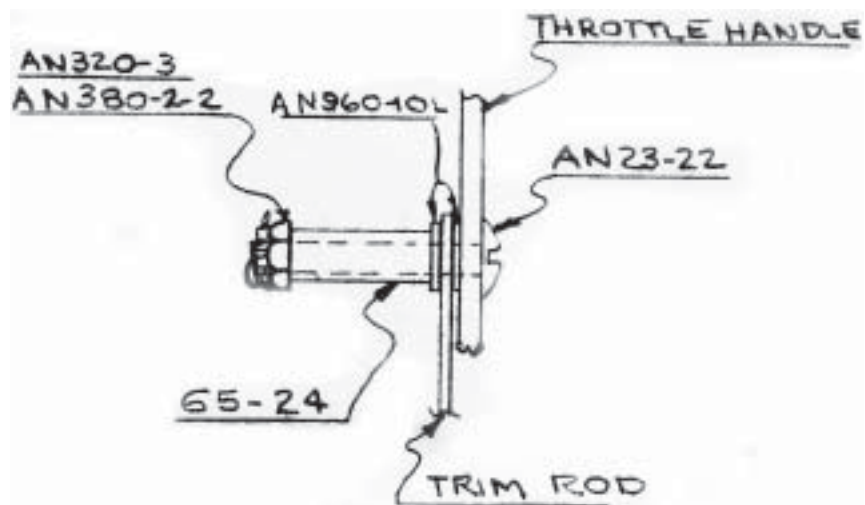


LAND LITE DETAIL E

MUST MISS KNOB
ON GENERATOR

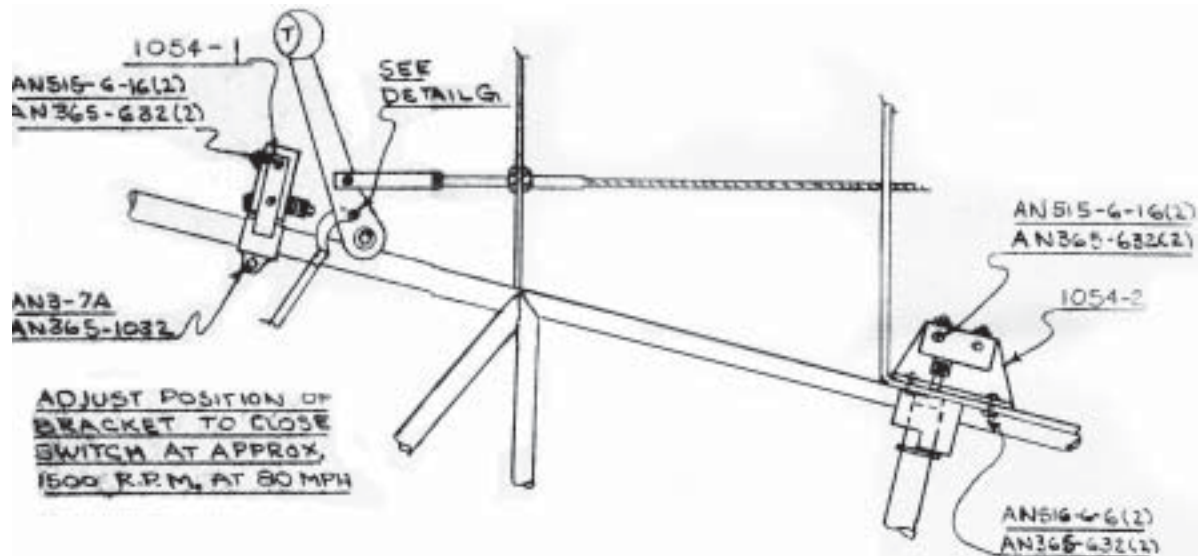


FIREWALL ROUTING DETAIL F



DETAIL G

ELECTRICAL SYSTEM M-18C WITH -12	DRN. BAYS 4-25-52
	MODEL M-18C
	SCALE NONE
MOONEY AIRCRAFT INC WICHITA KANSAS	1097

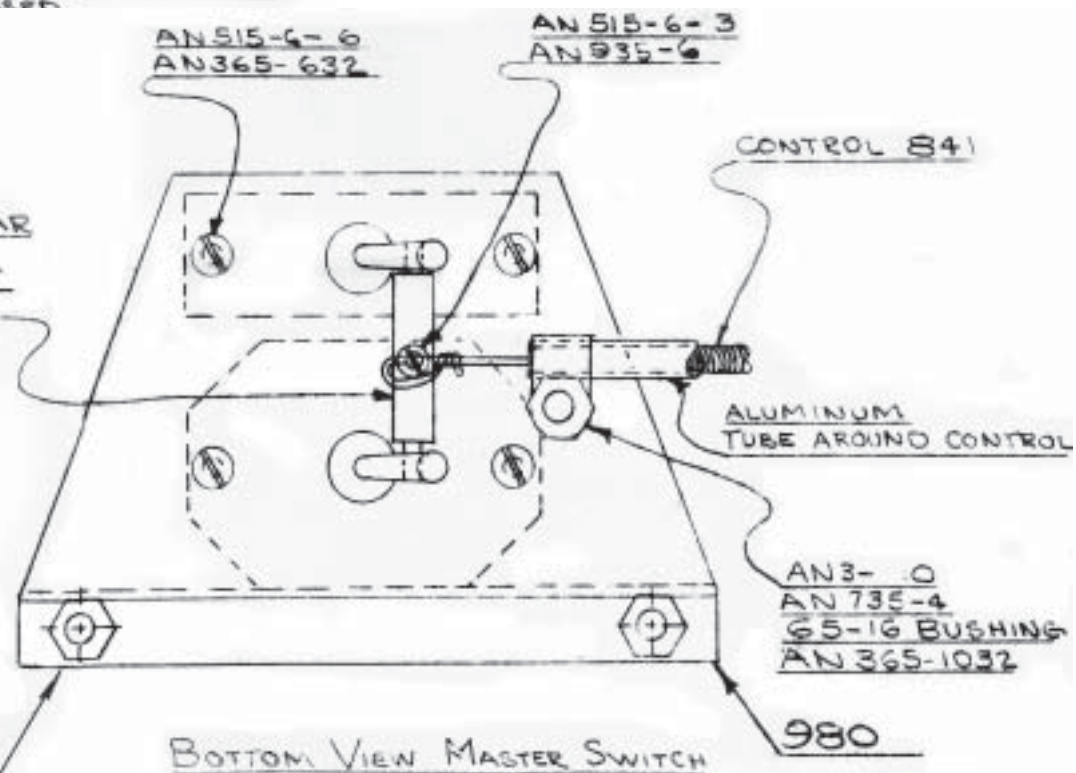


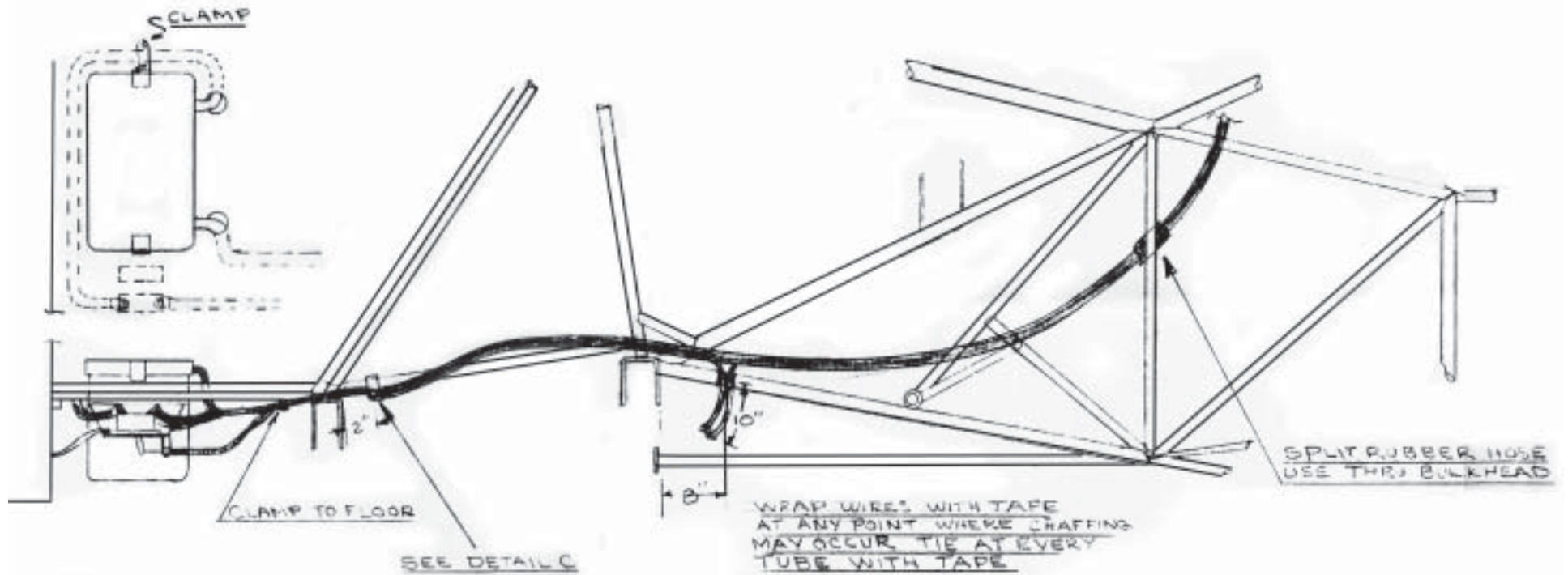
WARNING SWITCH DETAIL

PLUNGER MUST BE LOCATED
OVER CENTER OF HANDLE WITH
GEAR DOWN PLUNGED DE-
CREASED.

ELECTRICAL SYSTEM M-18C WITH -12	DRN. BAYS 4-25-52
	MODEL M-18C
	SCALE NONE
MOONEY AIRCRAFT INC WICHITA KANSAS	1097

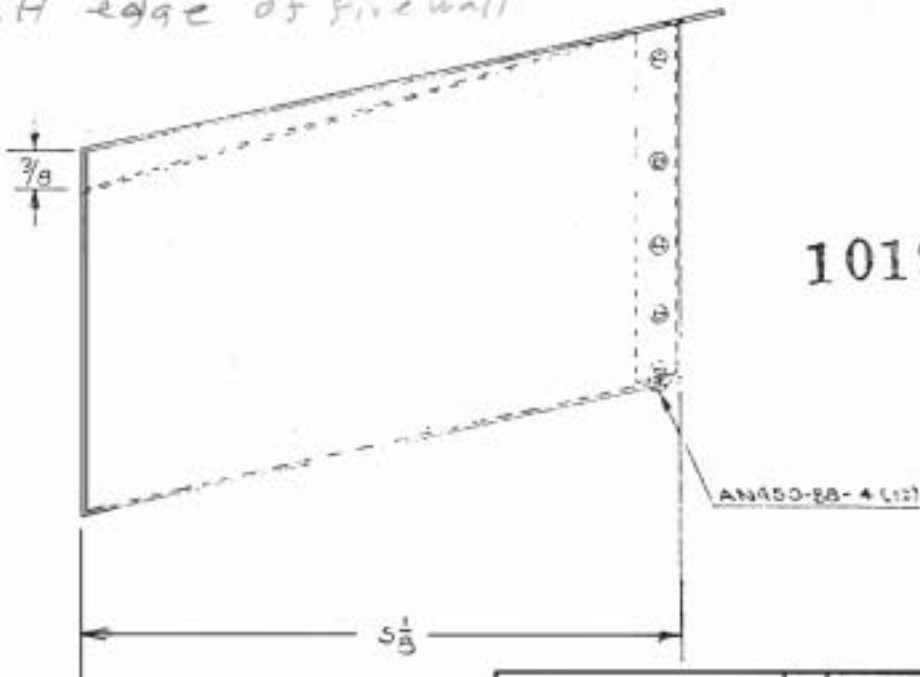
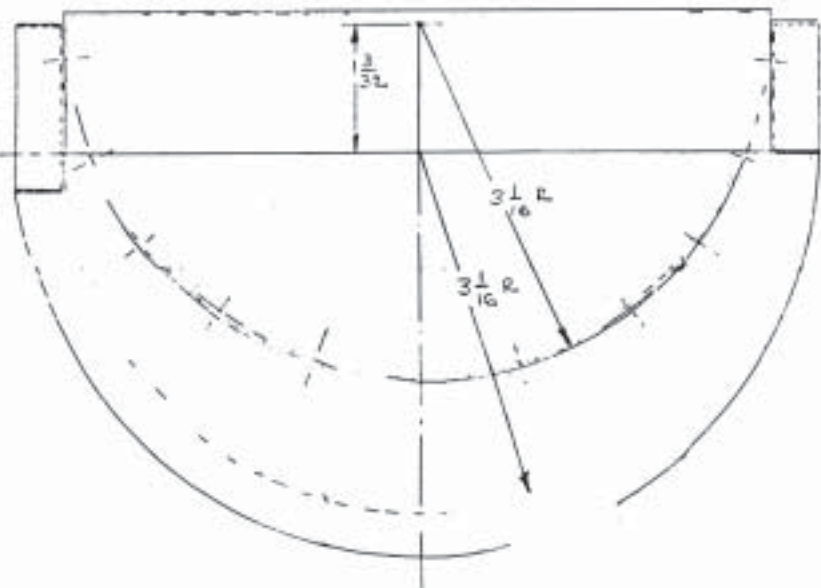
MASTER BAR
SUPERIOR
AIRCRAFT
10228-8





ELECTRICAL SYSTEM M-18C WITH -12	DRN. BAYS 4-25-52
	MODEL M-18C
	SCALE NONE
MOONEY AIRCRAFT INC WICHITA KANSAS	1097

1019 $6\frac{1}{8}$ " from
LH edge of fire wall



1019

ALL FLANGES $\frac{3}{8}$ FOR CONT.-12 ENGINES ONLY

MAT. $\frac{3}{8}$ 1010 TO 1020 ELECTRO-ZINC
PLATED STEEL

Box. GENERATOR	DRW. 3-1550 DME
	MODEL M-100
MOONEY AIRCRAFT INC. WICHITA, KANSAS	SCALE FDL
	1019